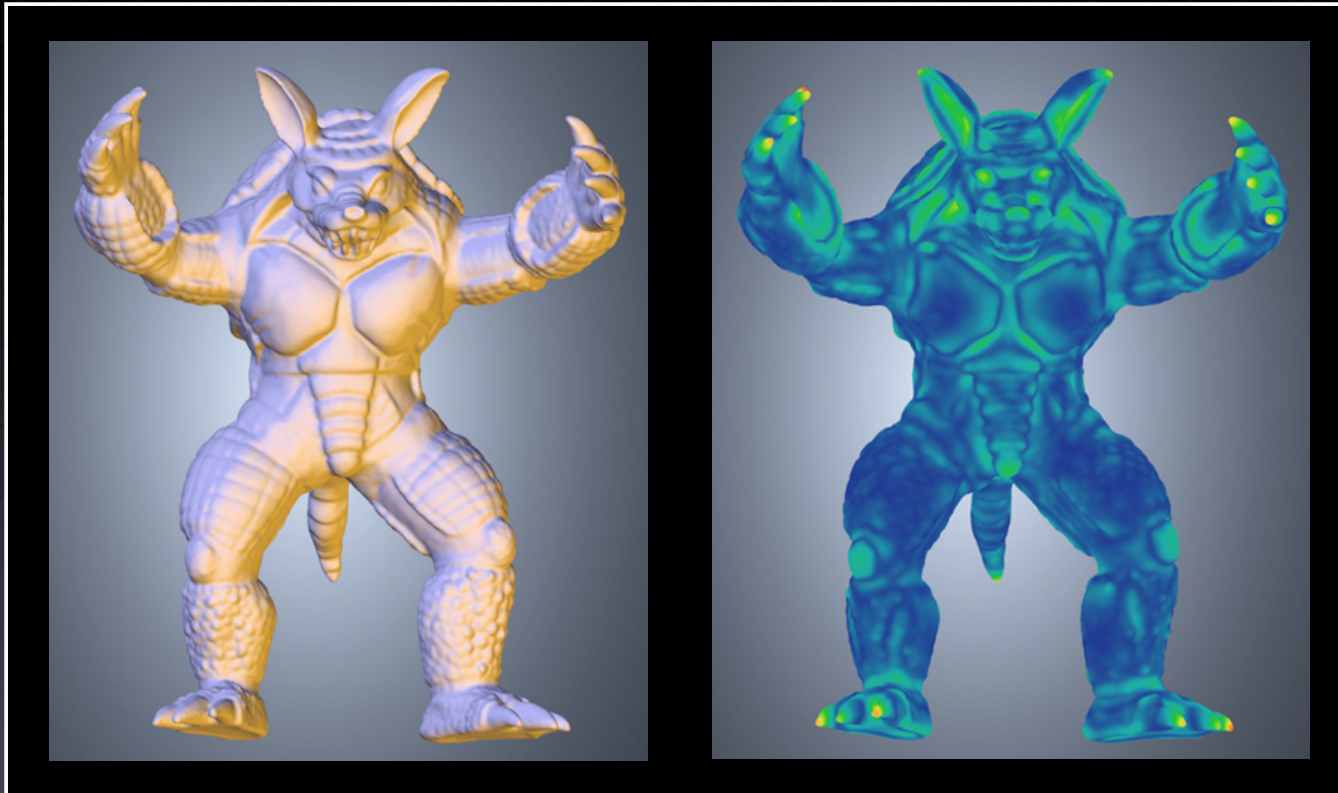


Mesh Saliency

Chang Ha Lee, Amitabh Varshney, and David W. Jacobs

Presented by Patrick Coleman

November 15, 2005



Mesh Saliency

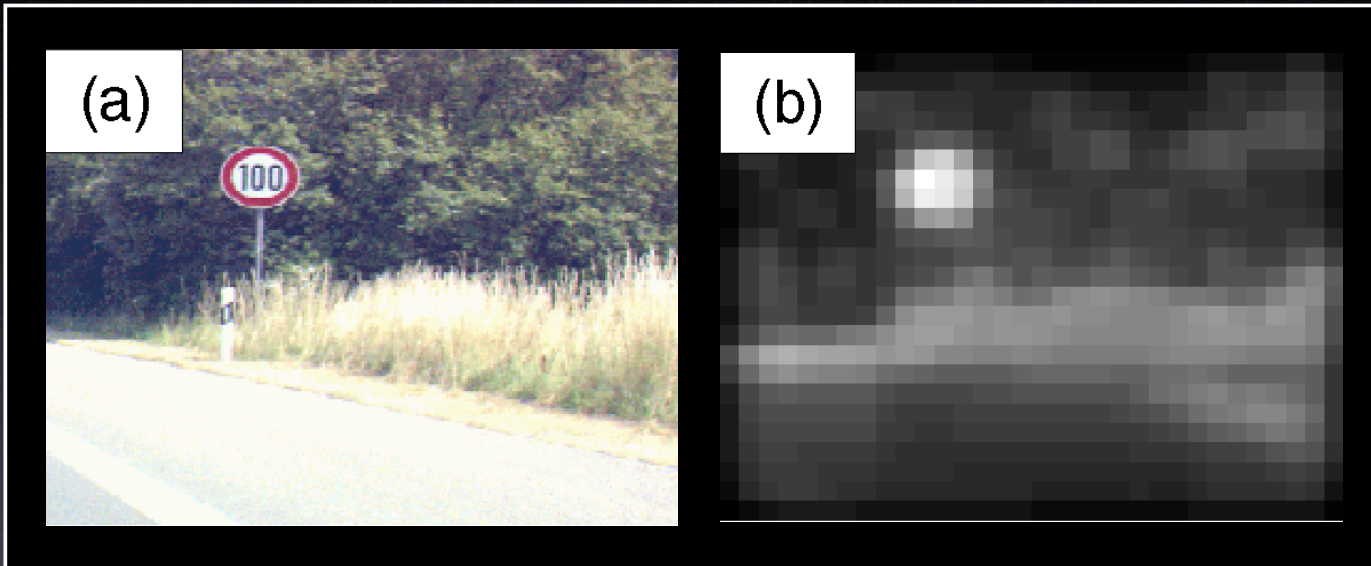


Image Saliency

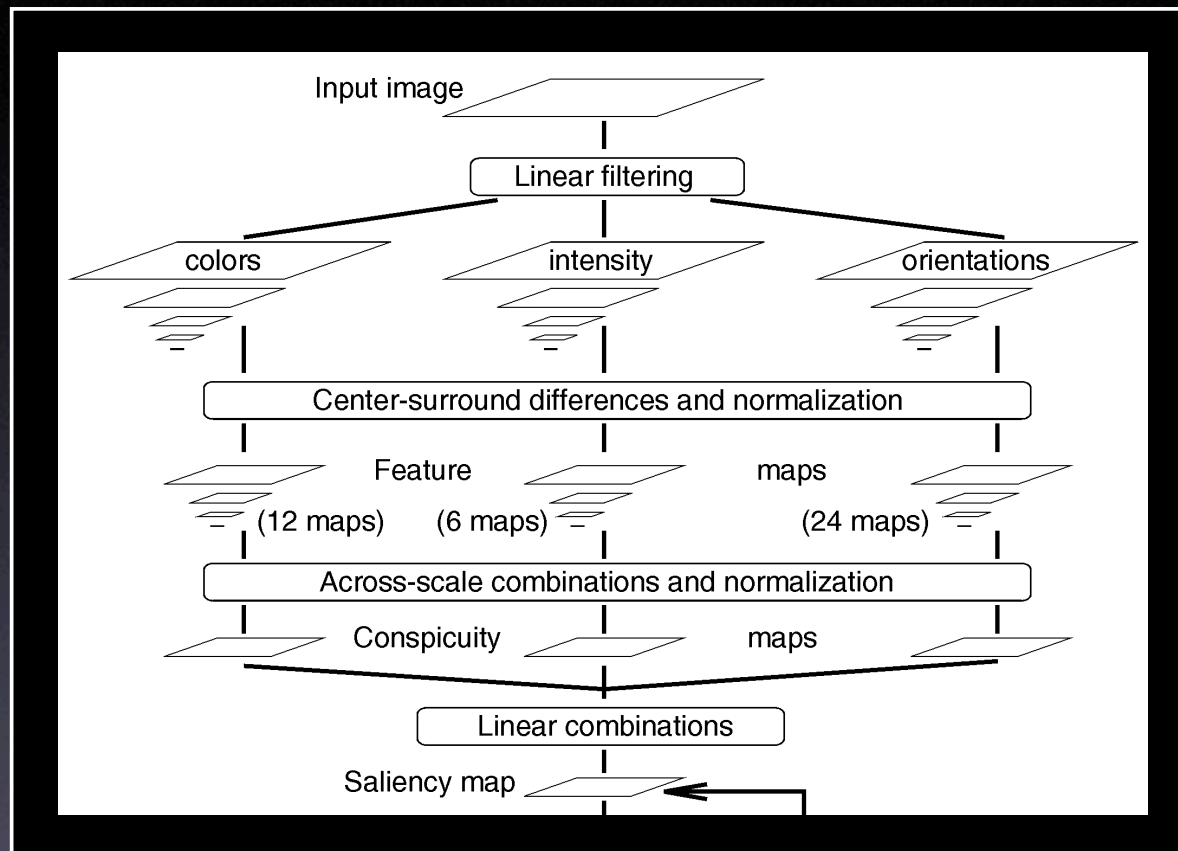
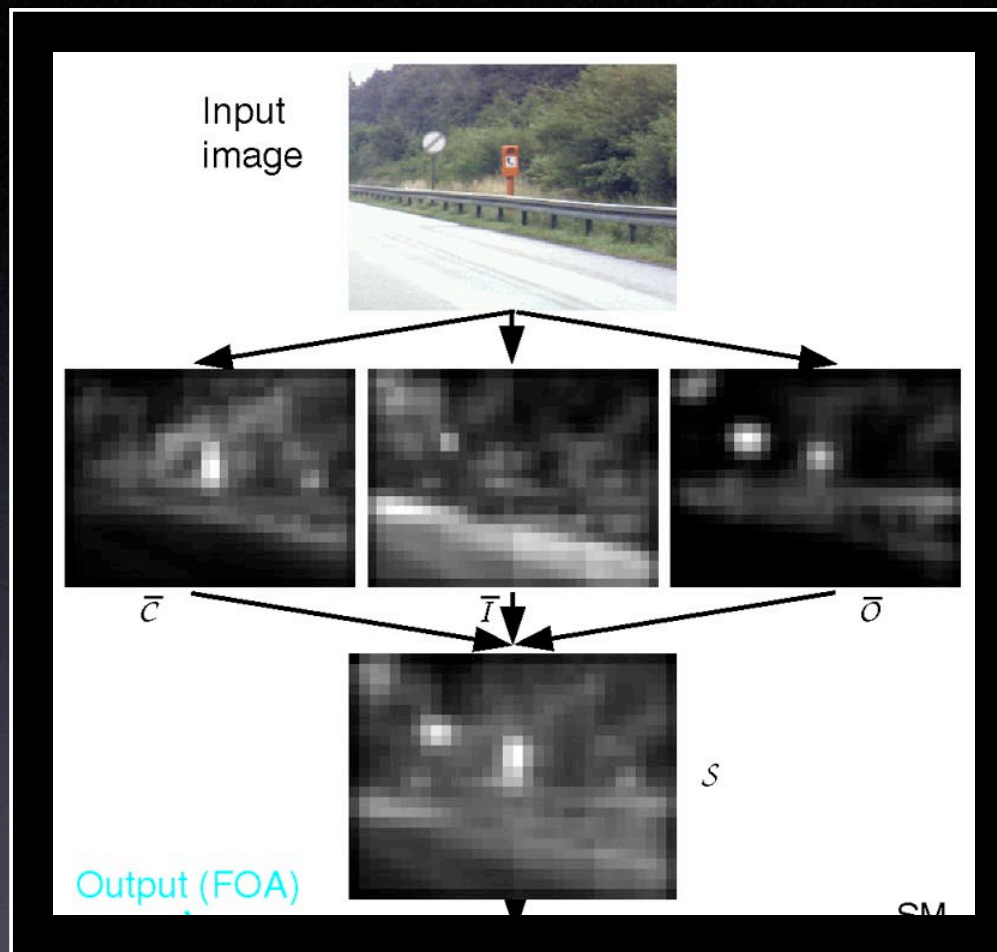
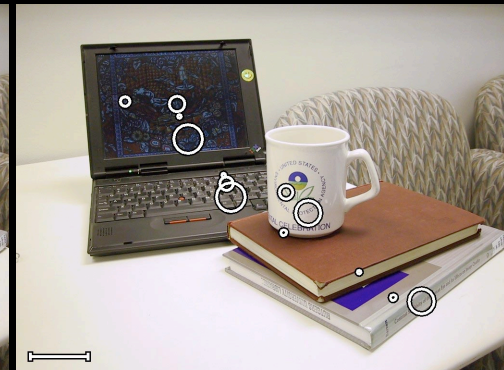
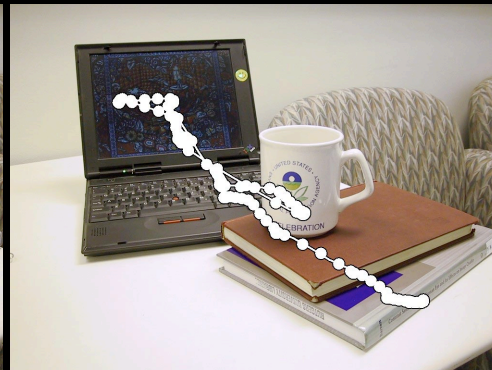


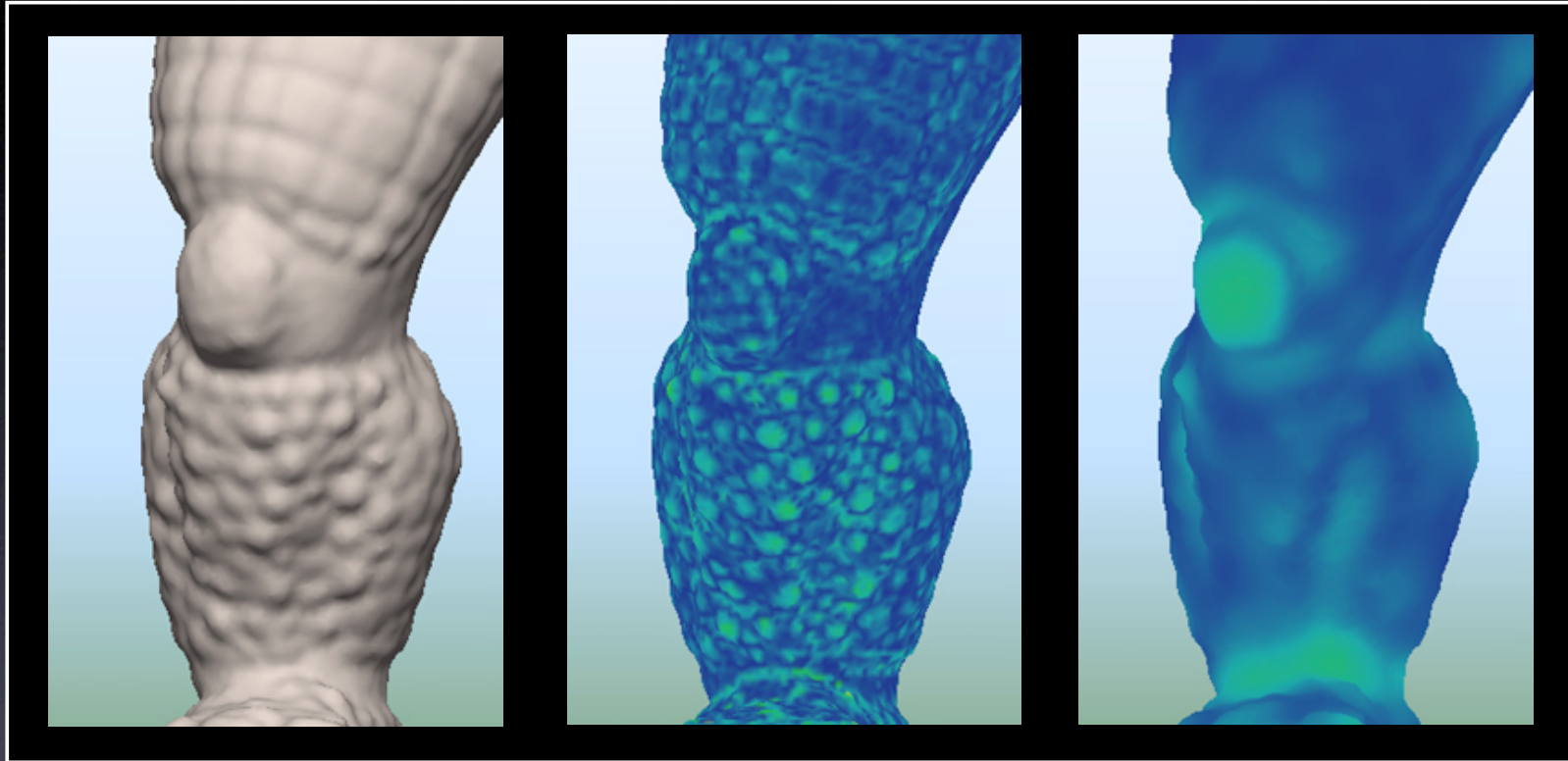
Image Saliency Algorithm



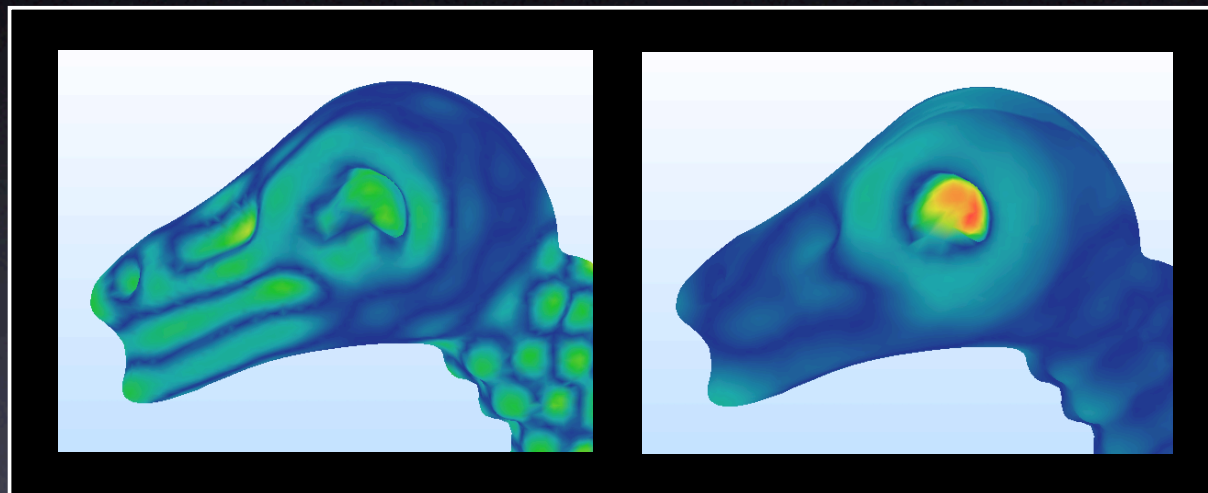
Conspicuity Maps



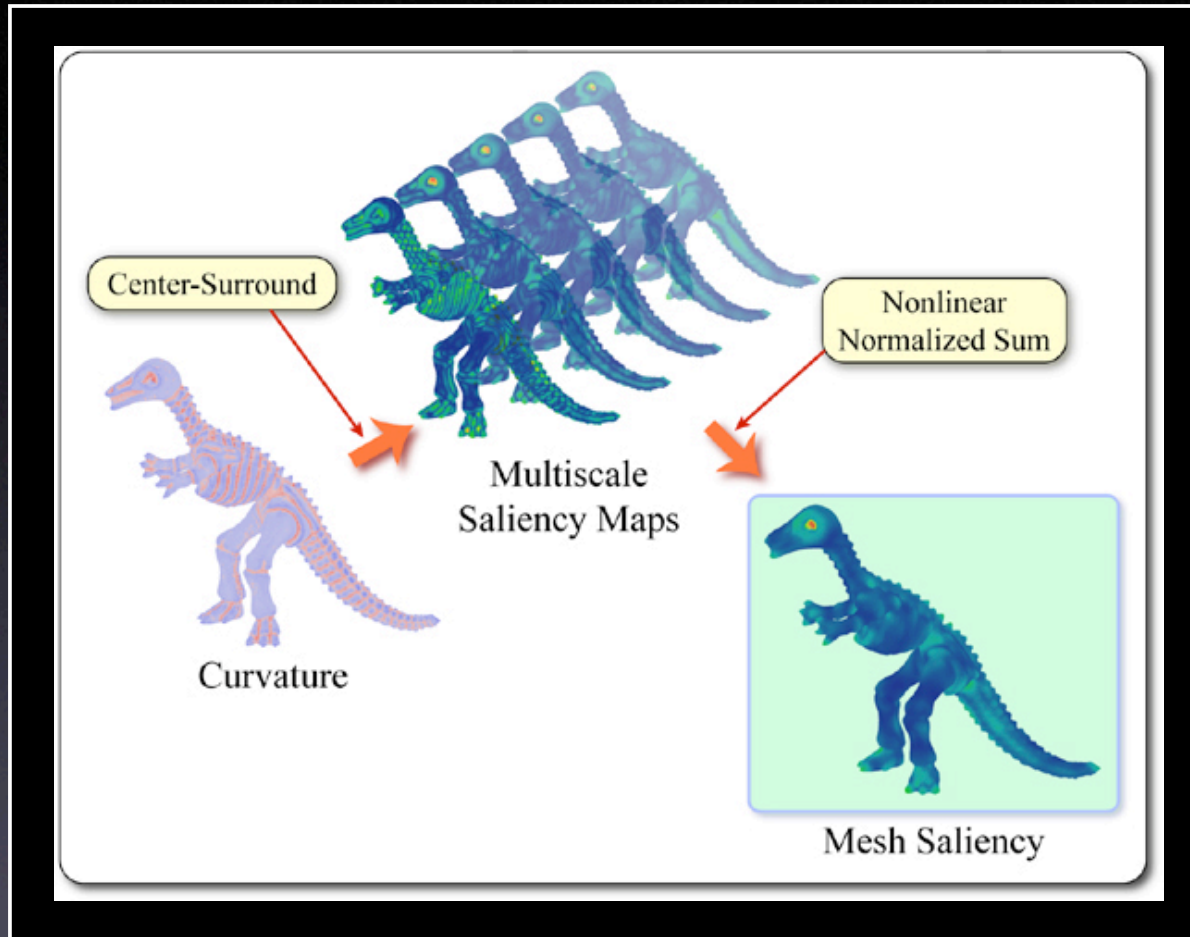
Measured Saliency



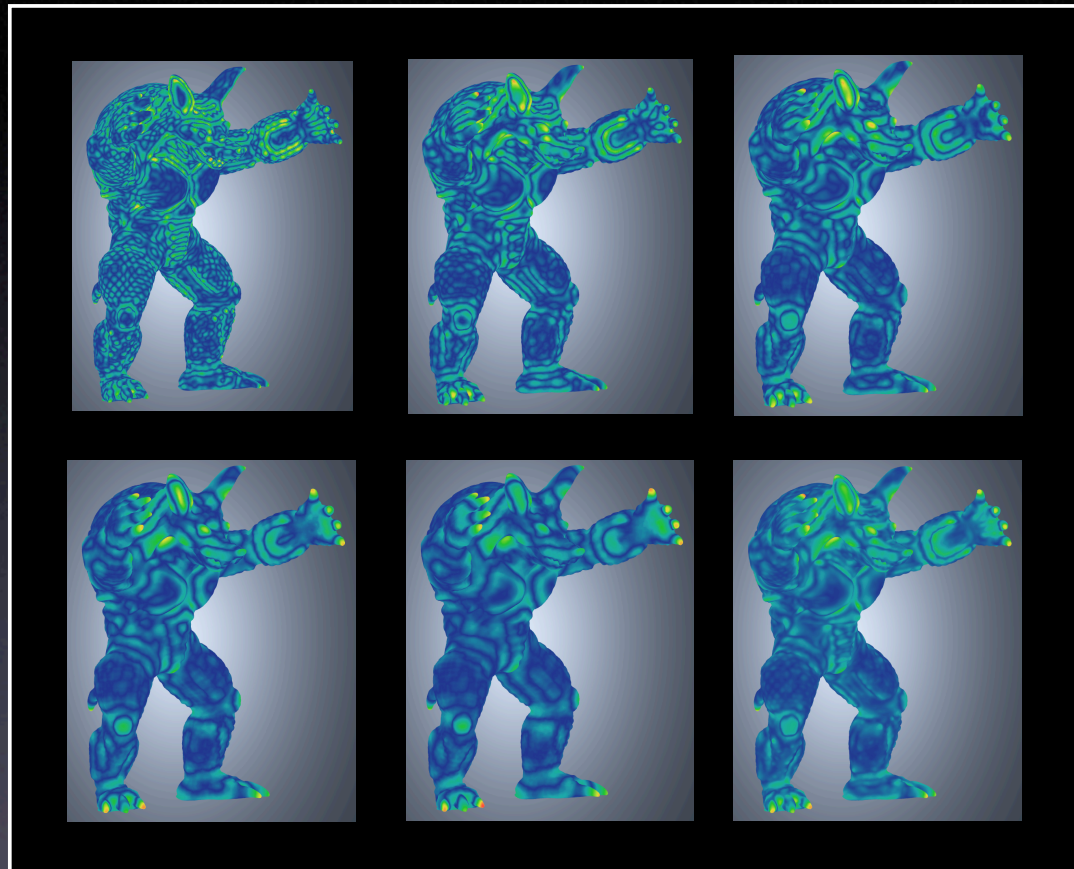
Saliency vs. Curvature



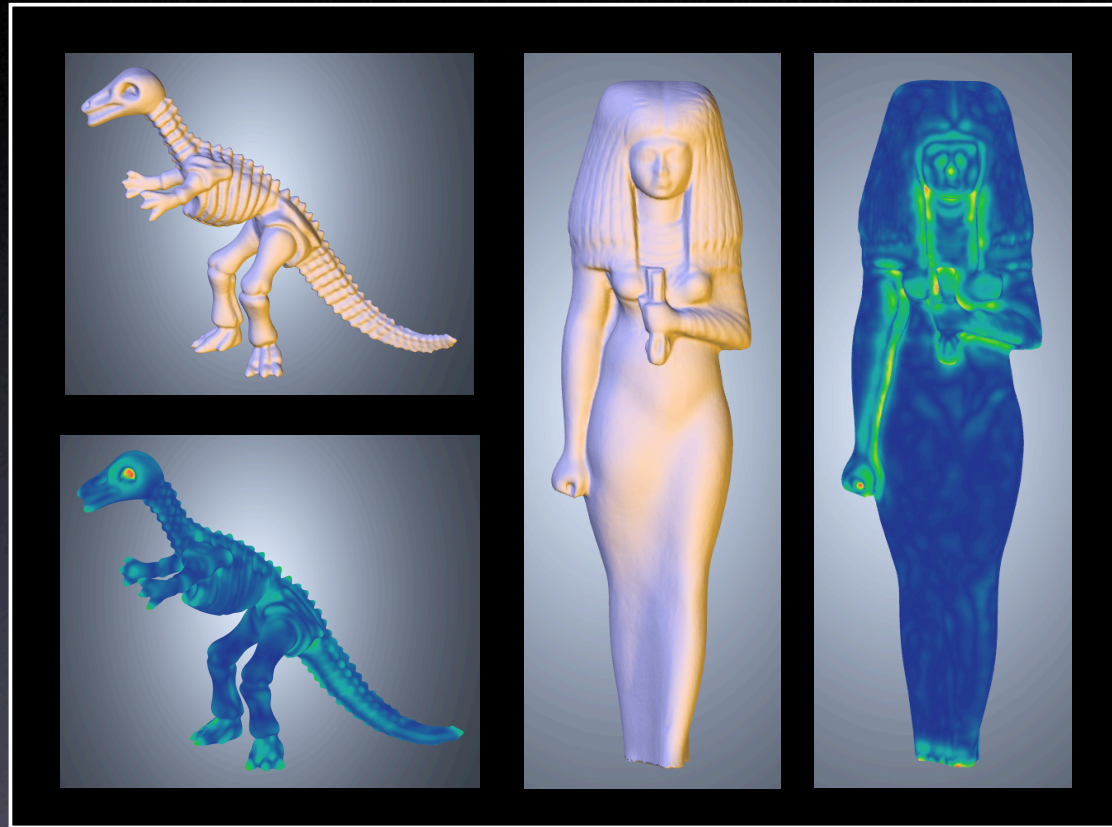
Multi-Scale Content



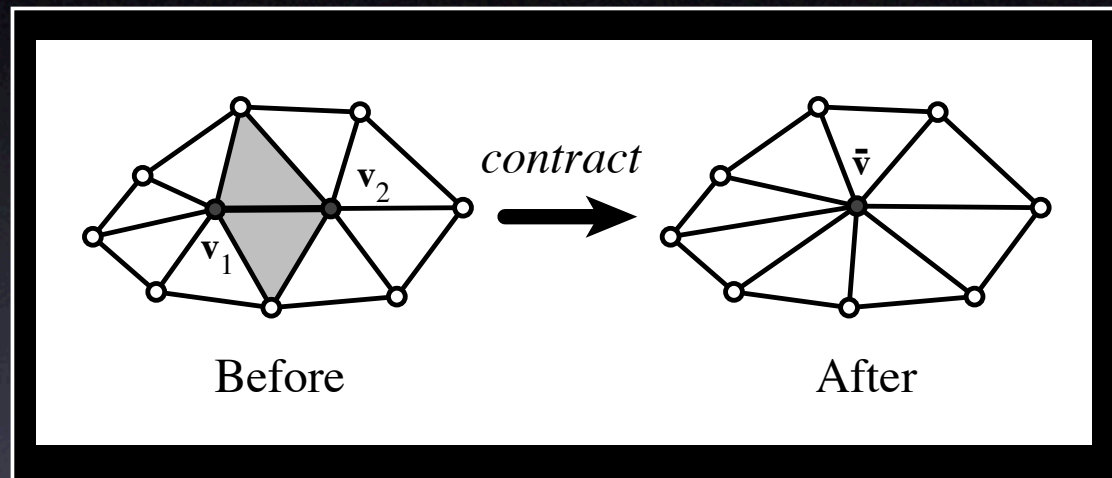
Mesh Saliency Algorithm



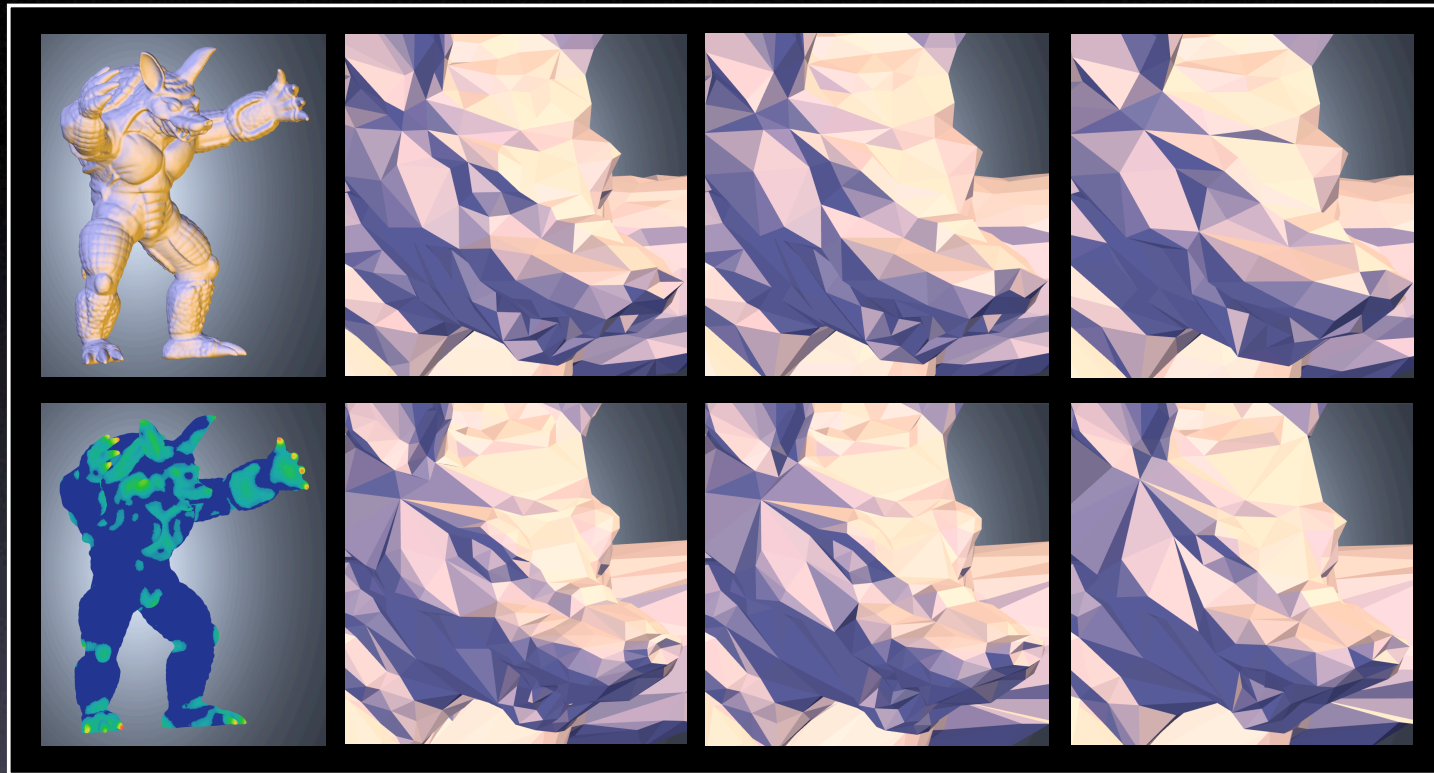
Multi-Scale Saliency



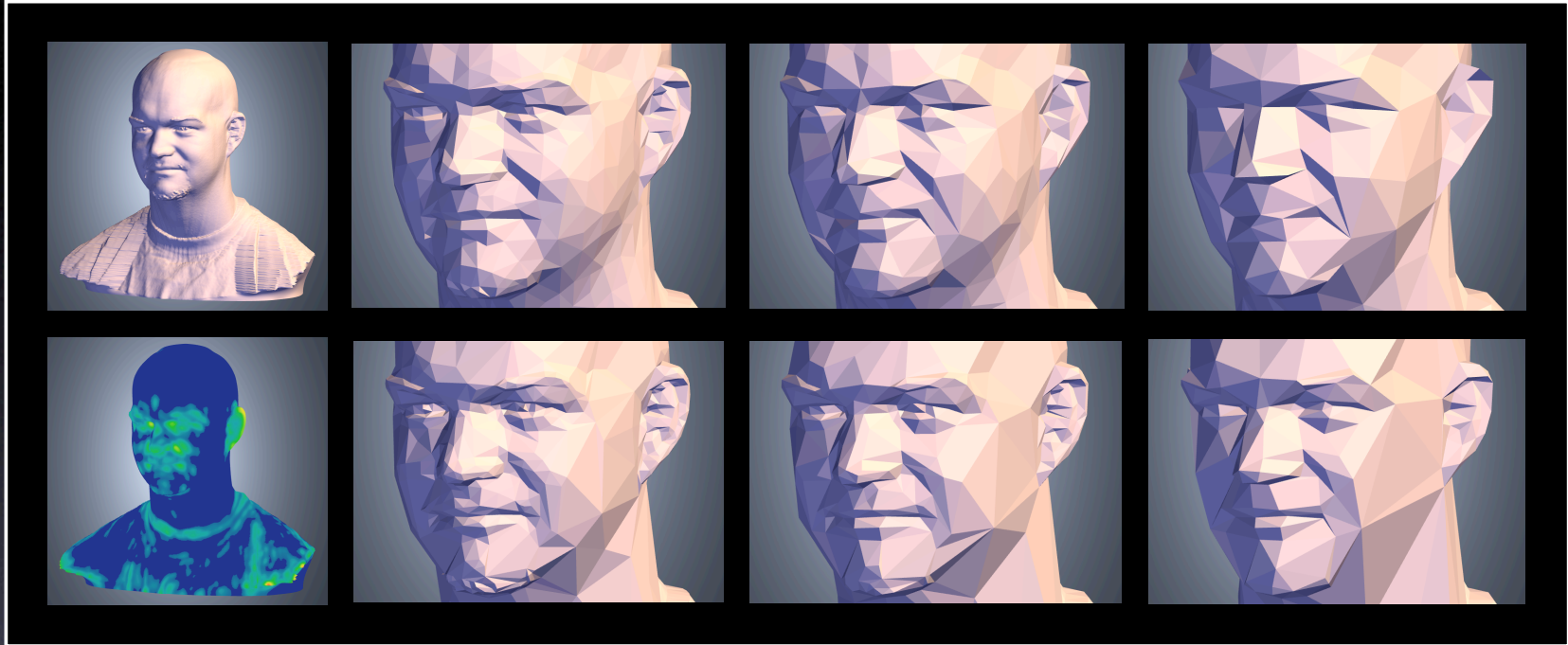
More Examples



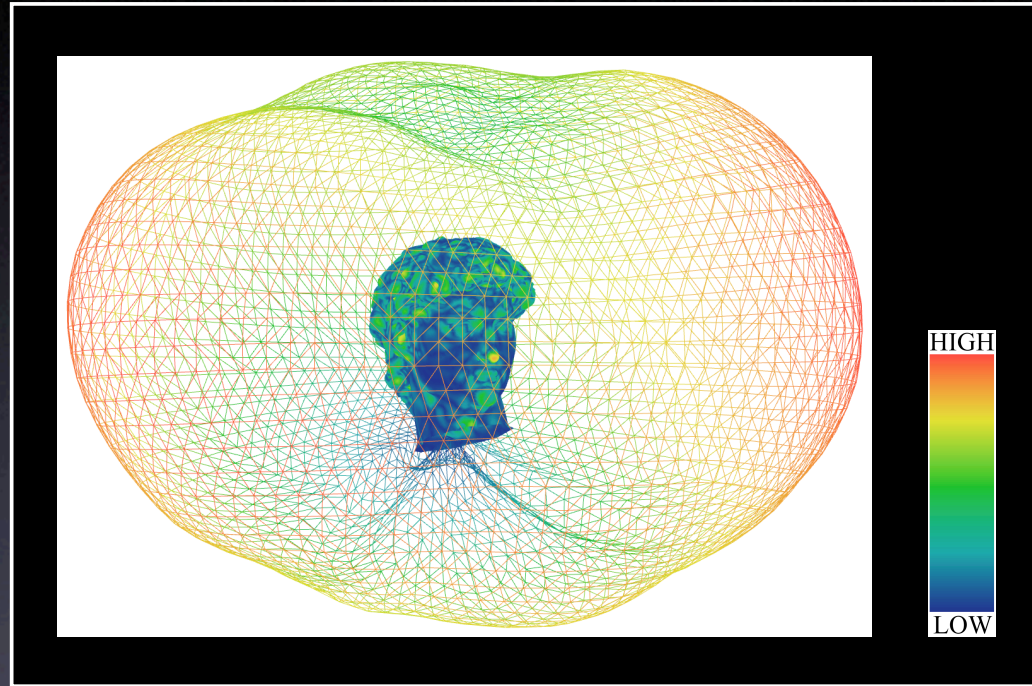
Simplification



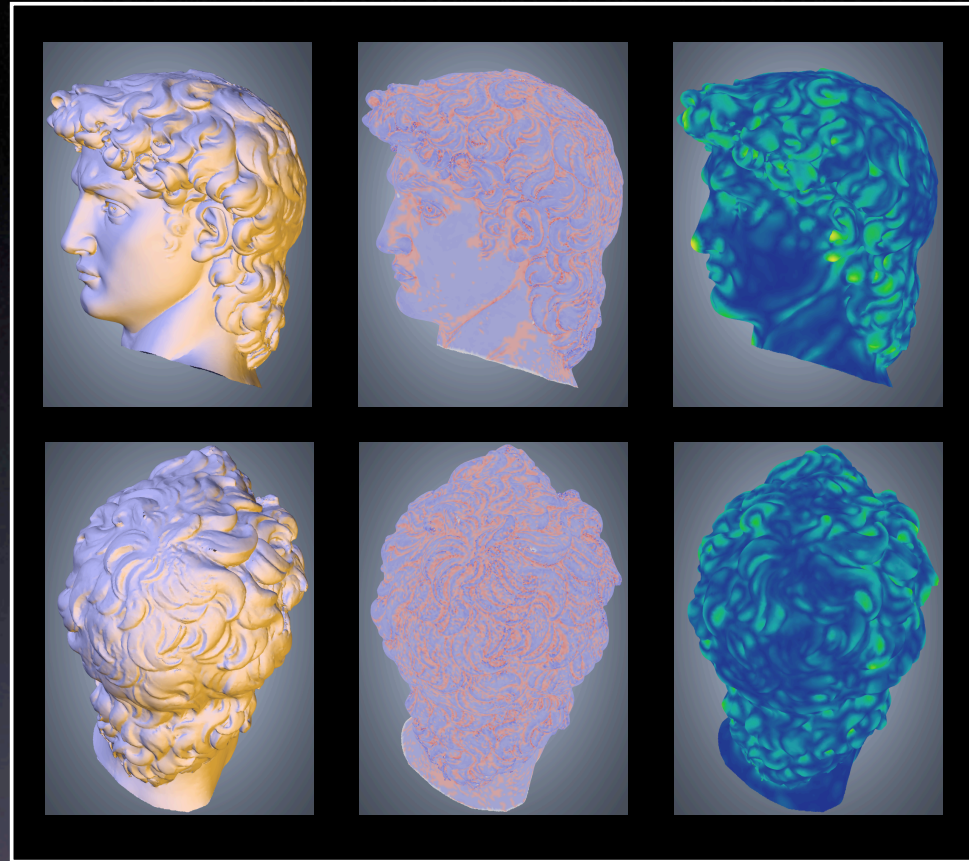
Simplification with Saliency



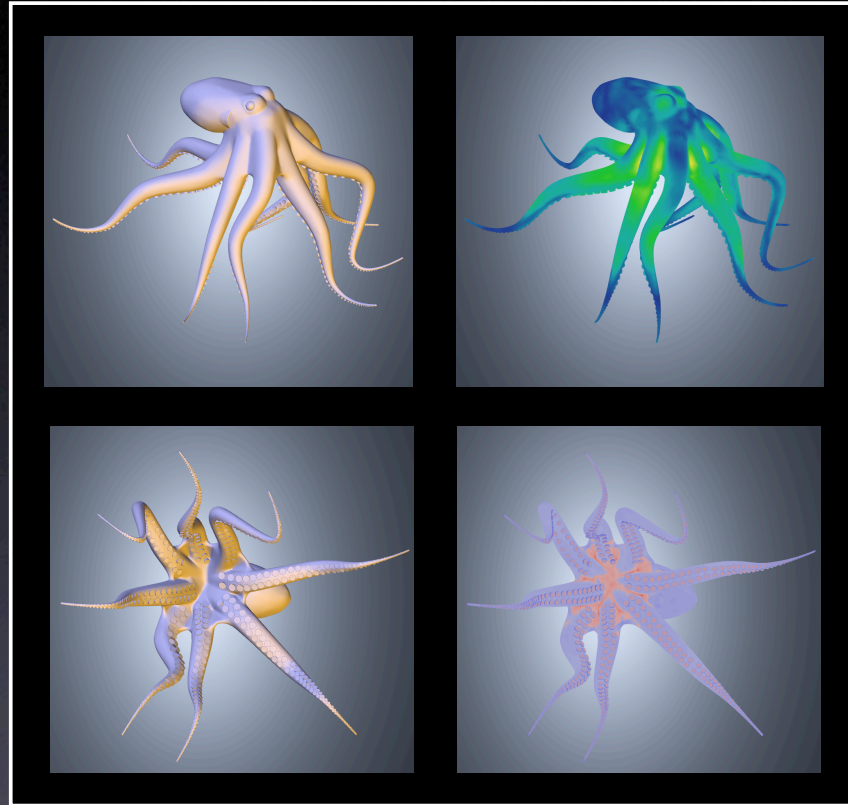
Simplification with Saliency



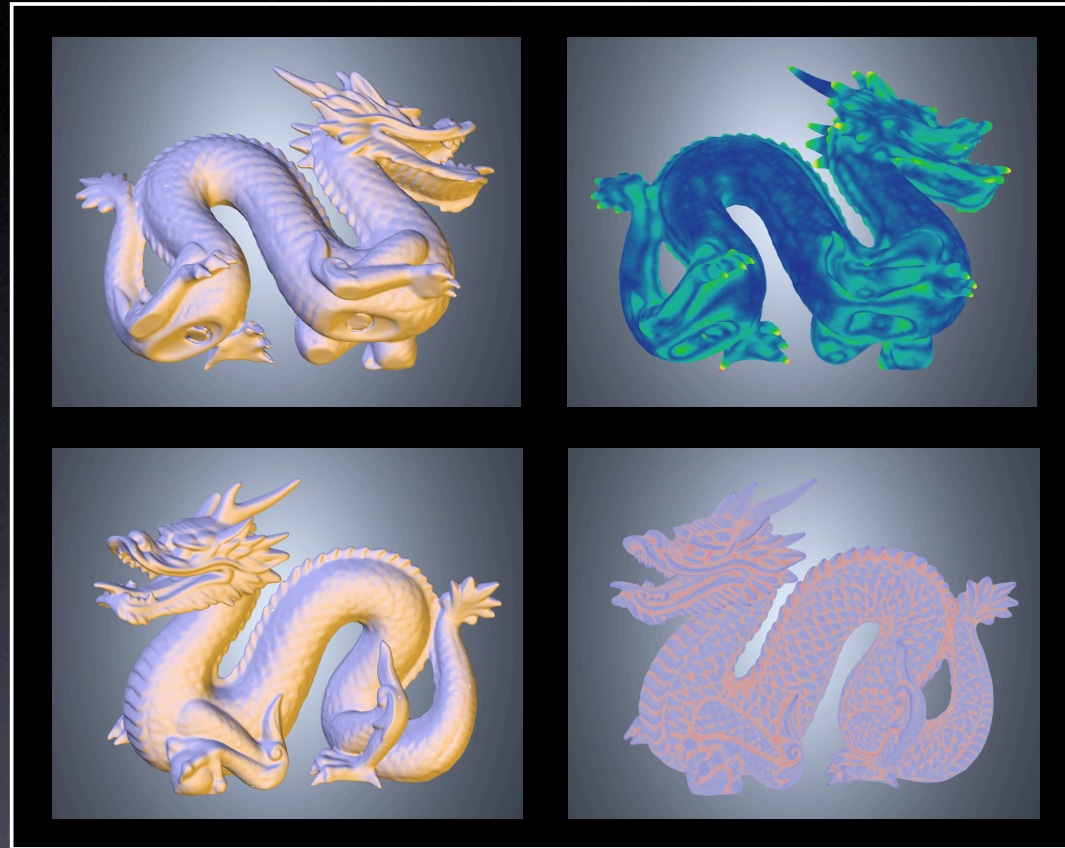
Viewpoint Selection



Viewpoint Selection



Viewpoint Selection



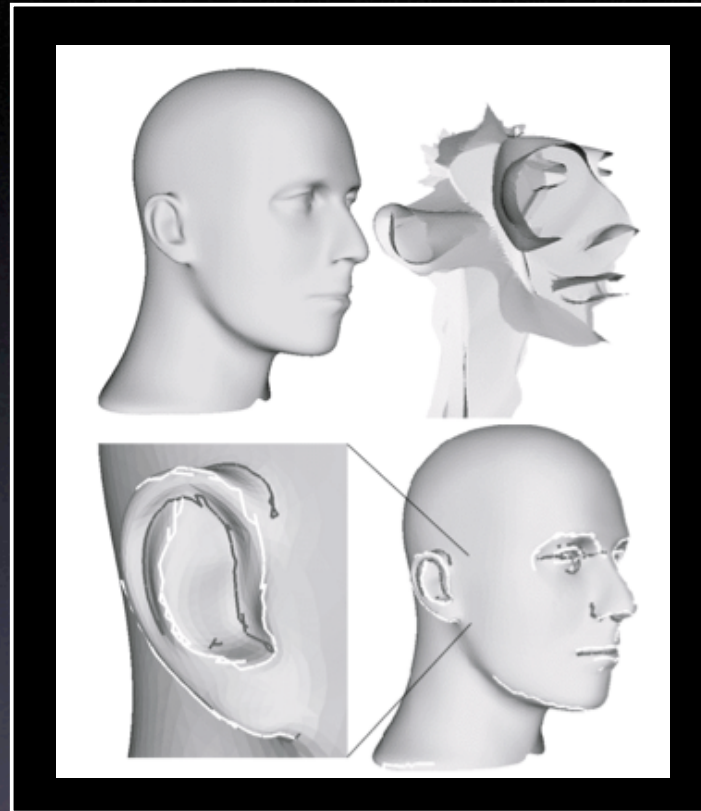
Viewpoint Selection



Curvature Extrema



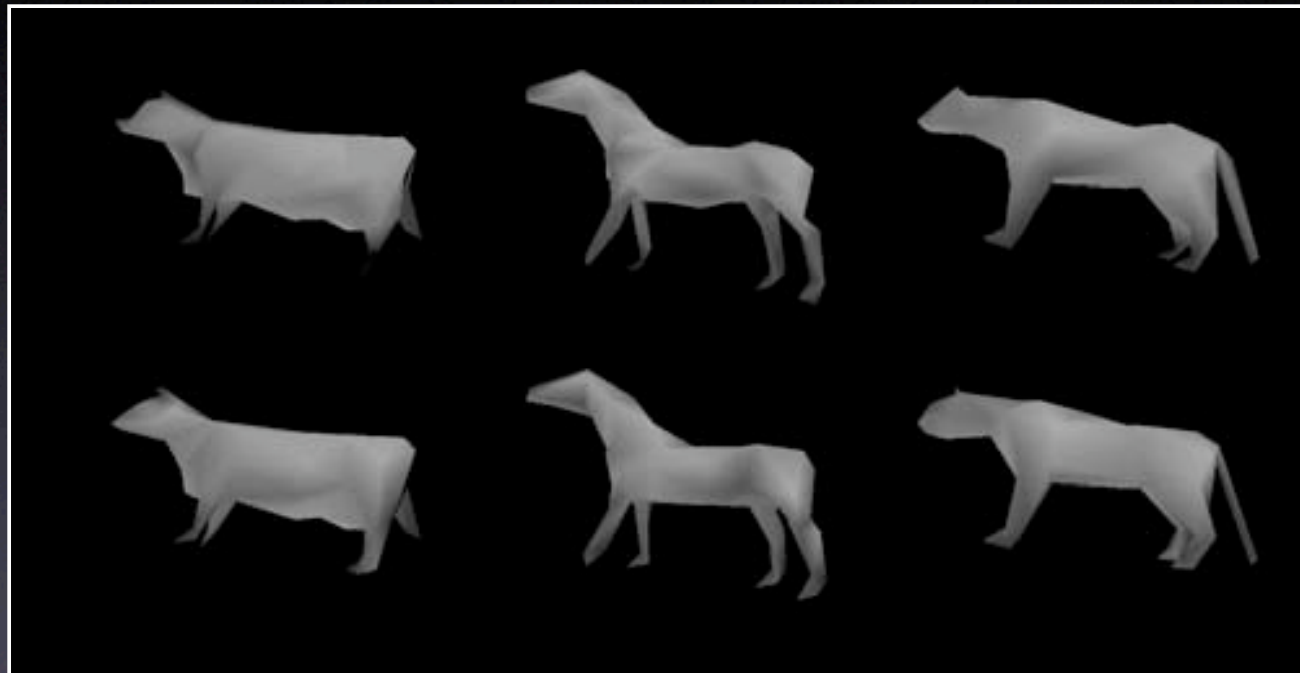
Curvature Extrema



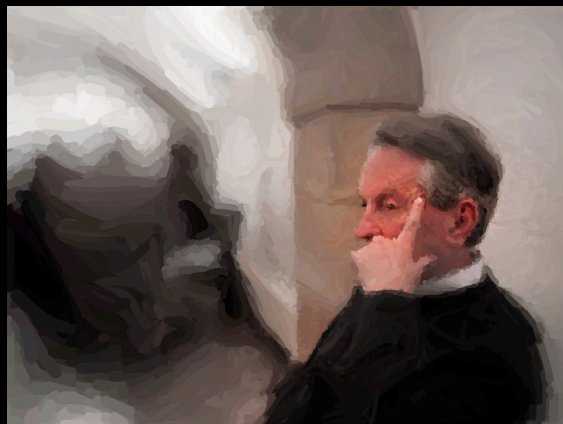
Medial Proximity



Measured Saliency



Measured Saliency



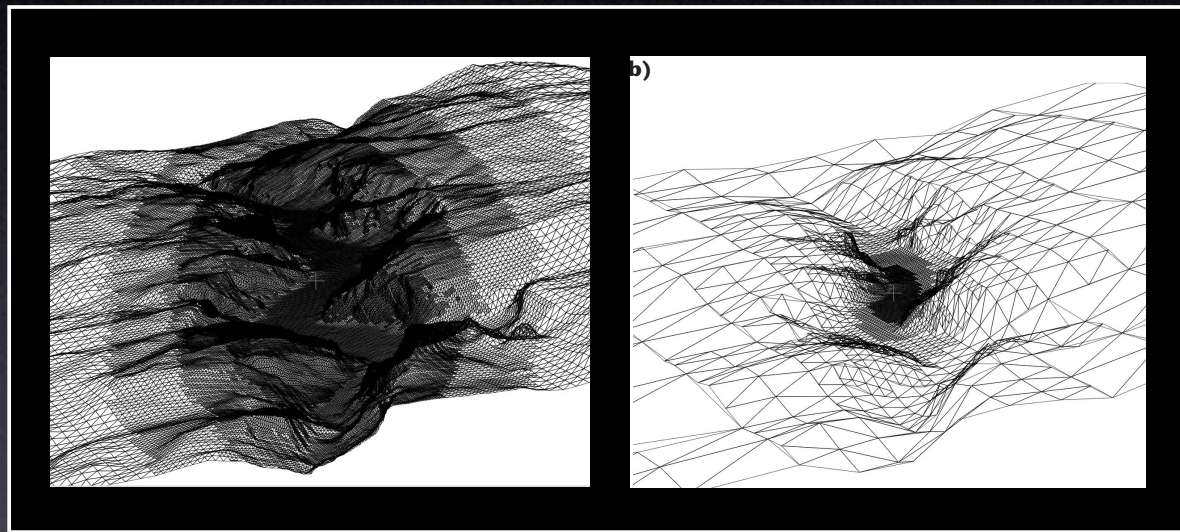
Saliency Applications



Saliency Applications



Saliency Applications



Saliency Applications