

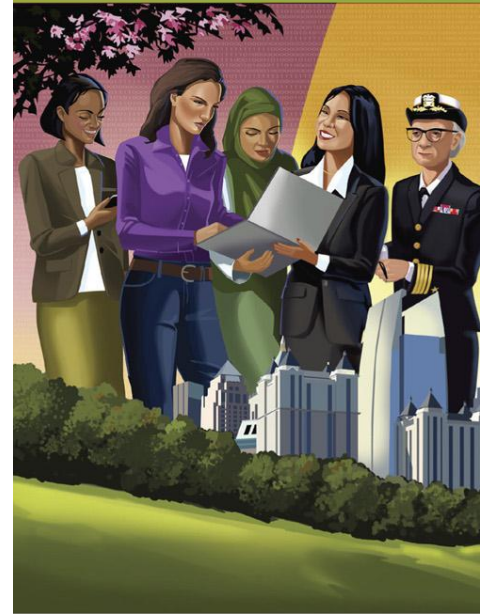
2010

Barbie has a Pink Laptop:
Redefining How the World Views
a Computer Scientist

Alyssa Rosenzweig, University of Toronto

Victoria Schwanda, Cornell University

Jennifer Rosenzweig, Dragonfly ORG



ANITA BORG INSTITUTE
FOR WOMEN AND TECHNOLOGY



Association for
Computing Machinery

THE GRACE HOPPER CELEBRATION OF WOMEN IN COMPUTING

Welcome!

- Introductions
- Session Purpose



2010

THE GRACE HOPPER CELEBRATION
OF WOMEN IN COMPUTING



ANITA BORG INSTITUTE
FOR WOMEN AND TECHNOLOGY

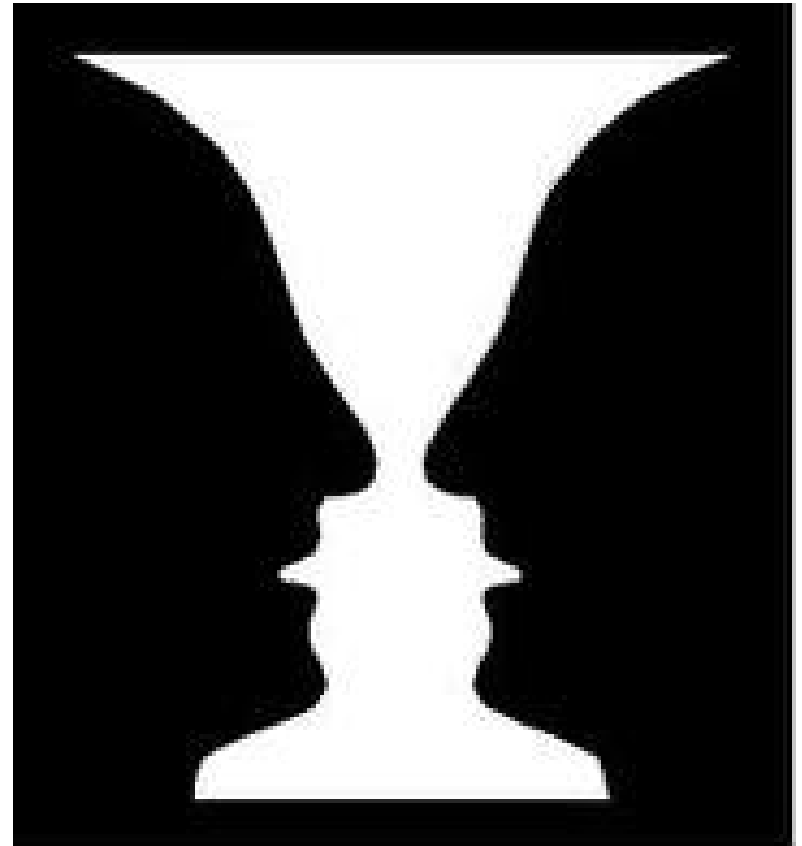


Association for
Computing Machinery

Gestalt Theory

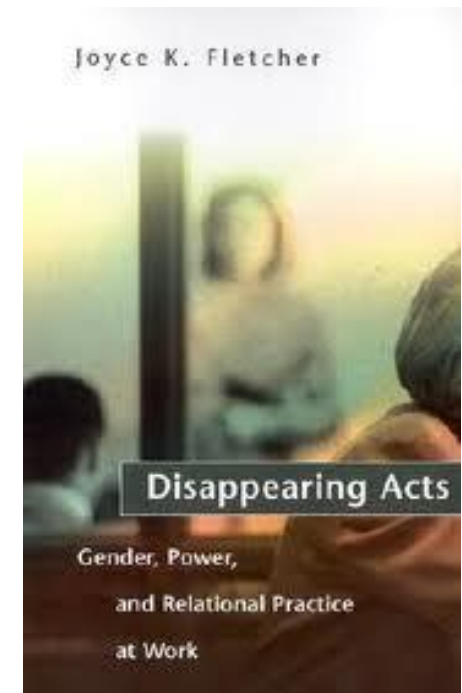
Figure vs. Ground

- Seeing the image is a function of the “ground”
- Ground is “invisible” to us, yet it plays an influential role
- Our “ground” often consists of:
 - Values
 - Beliefs
 - Assumptions



Fletcher's "Disappearing Acts"

- Study of female design engineers
- Examined the organization's attempt to become more collaborative in their work
- Fletcher observed that relational behaviors were often "disappeared" even when they furthered the organization's goals



Implications for Being a “Computer Scientist”

- Today’s session will...
 - Explore a range of definitions for what it means to be a computer scientist
 - Examine the “ground” that influences these definitions
 - Use this knowledge to identify ways to shift conversations and make new views of “computer science” visible to others

Discussion Question #1

Work in Pairs!

Think of a time when you introduced yourself as a computer scientist...and you weren't connecting!

- How would you describe your definition of the role?
- How would you describe theirs?
- How did this “disconnect” influence the nature of the dialogue (or didn't it?)
- How did it make you feel?

Discussion Question #2

Make groups of four!

For each of these two views, consider the following questions...

- If we define each definition of a computer scientist as our “figure,” what’s the “ground” for each of them...

...what values, beliefs and assumptions influence each of them?

Discussion Question #3

What can we do to shift the “value equation”...?

- What actions might we take and what conversations could we have that would promote these new values and beliefs, and in turn make the Emerging View more visible to others?
- What might change in our environment as a result of these efforts?

Questions?



2010

THE GRACE HOPPER CELEBRATION
OF WOMEN IN COMPUTING



ANITA BORG INSTITUTE
FOR WOMEN AND TECHNOLOGY



Association for
Computing Machinery

Alyssa Rosenzweig –
alyssacr@cs.toronto.edu

Victoria Schwanda –
vschwanda@cs.cornell.edu

Jennifer Rosenzweig –
jrosenzweig@dragonflyORG.com



2010

THE GRACE HOPPER CELEBRATION
OF WOMEN IN COMPUTING



ANITA BORG INSTITUTE
FOR WOMEN AND TECHNOLOGY



Association for
Computing Machinery